



Boydell Court, London, NW8 6NJ
£11,301 Per Month

B
BRAITHWAIT



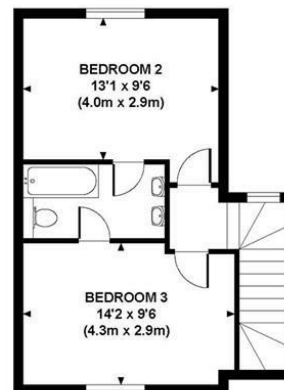
4 x  4 x  1 x 

This wonderful 3 bed 3 bath Apartment situated in London NW8 is available with the following facilities:
Close to public transport, Double glazing, En suite, Fully Furnished, Garden, Three Bathrooms.

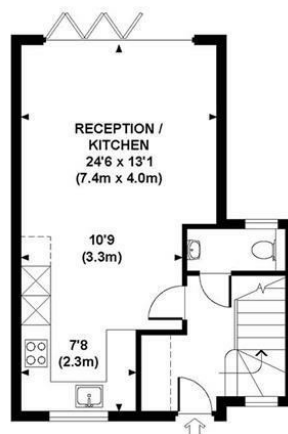


COURT CLOSE

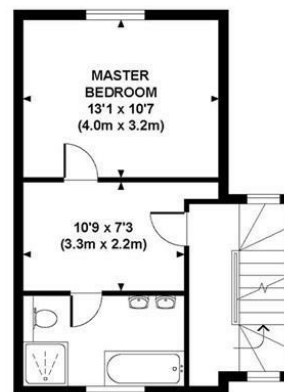
Approximate Gross Internal Area 1107 sq ft / 102.8 sq m



SECOND FLOOR
GROSS INTERNAL
FLOOR AREA 369 SQ FT



GROUND FLOOR
GROSS INTERNAL
FLOOR AREA 369 SQ FT



FIRST FLOOR
GROSS INTERNAL
FLOOR AREA 369 SQ FT

Although every attempt has been made to ensure accuracy, all measurements are approximate.
The floor plan's for illustrative purposes only and not to scale. Measured in accordance to RICS standards.
DE-PHOTOGRAPHY.NET

Important Notice Debussy Property Service Ltd trading as Braithwait for themselves and for the vendor of this property whose agents they are, give notice that (i) these particulars do not constitute any part of an offer or contract, (ii) all statements contained within these particulars are made without responsibility on the part of Braithwait or the vendor, (iii) whilst none in good faith, none of the statements contained within these particulars are to be relied upon as a statement of representation or fact, (iv) any intending purchaser must satisfy him/herself by inspection or otherwise as to the correctness of each of the statements contained within these particulars, (v) the vendor does not make or give either Braithwait or any person within their employment any authority to make or give any representation or warranty whatsoever in relation to this property. Wide angled lenses may be used in photographs.

Call us on 0207 289 8889 or email sales@braithwait.co.uk

B
BRAITHWAIT